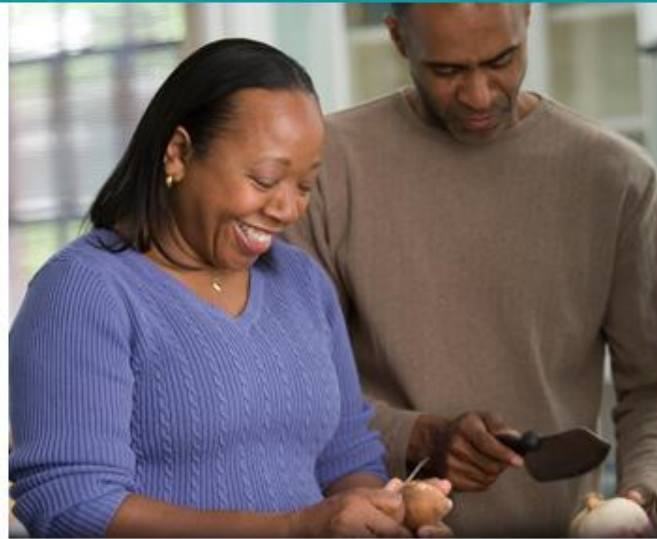


2016 Preliminary Balanced Budget Presentation



Presented by: Dan Martindale, MPA
El Paso County Public Health Director



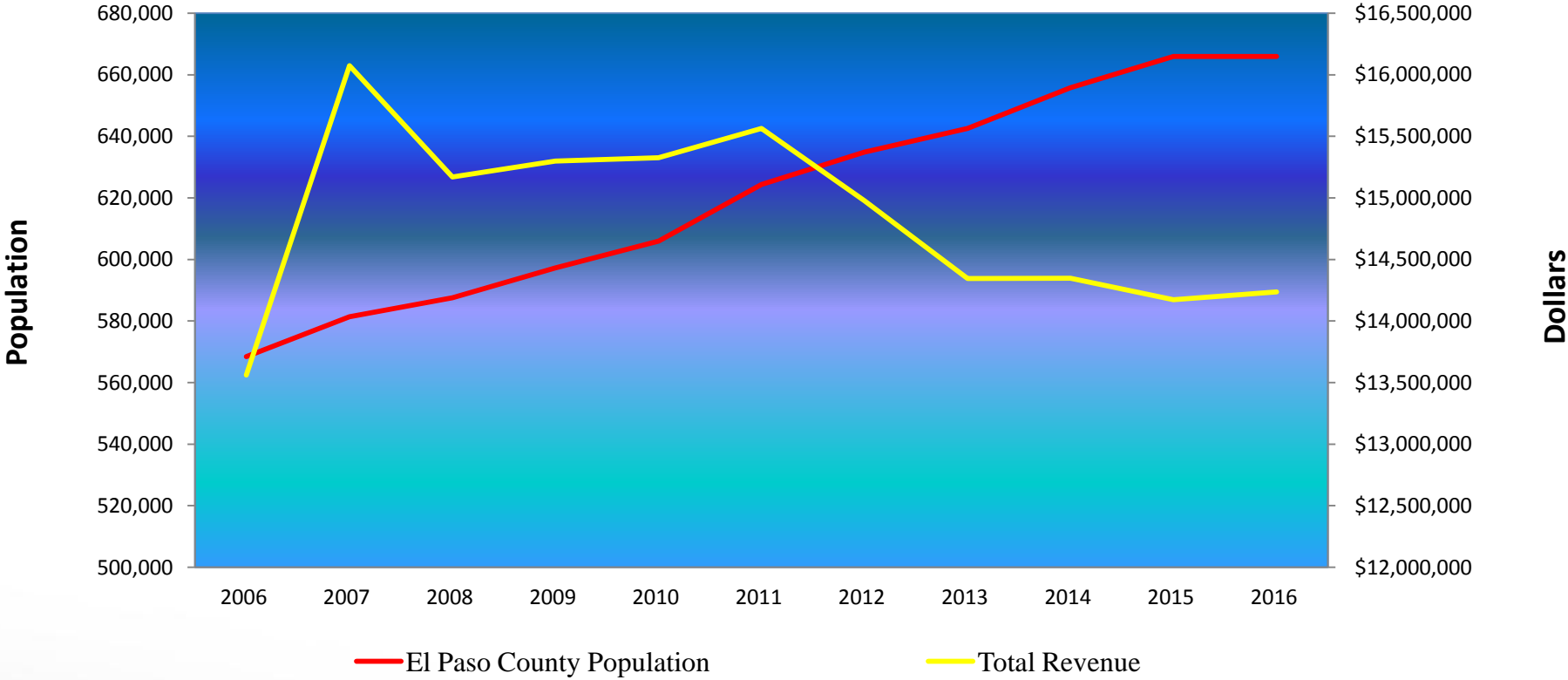
Prevent • Promote • Protect

Brief History



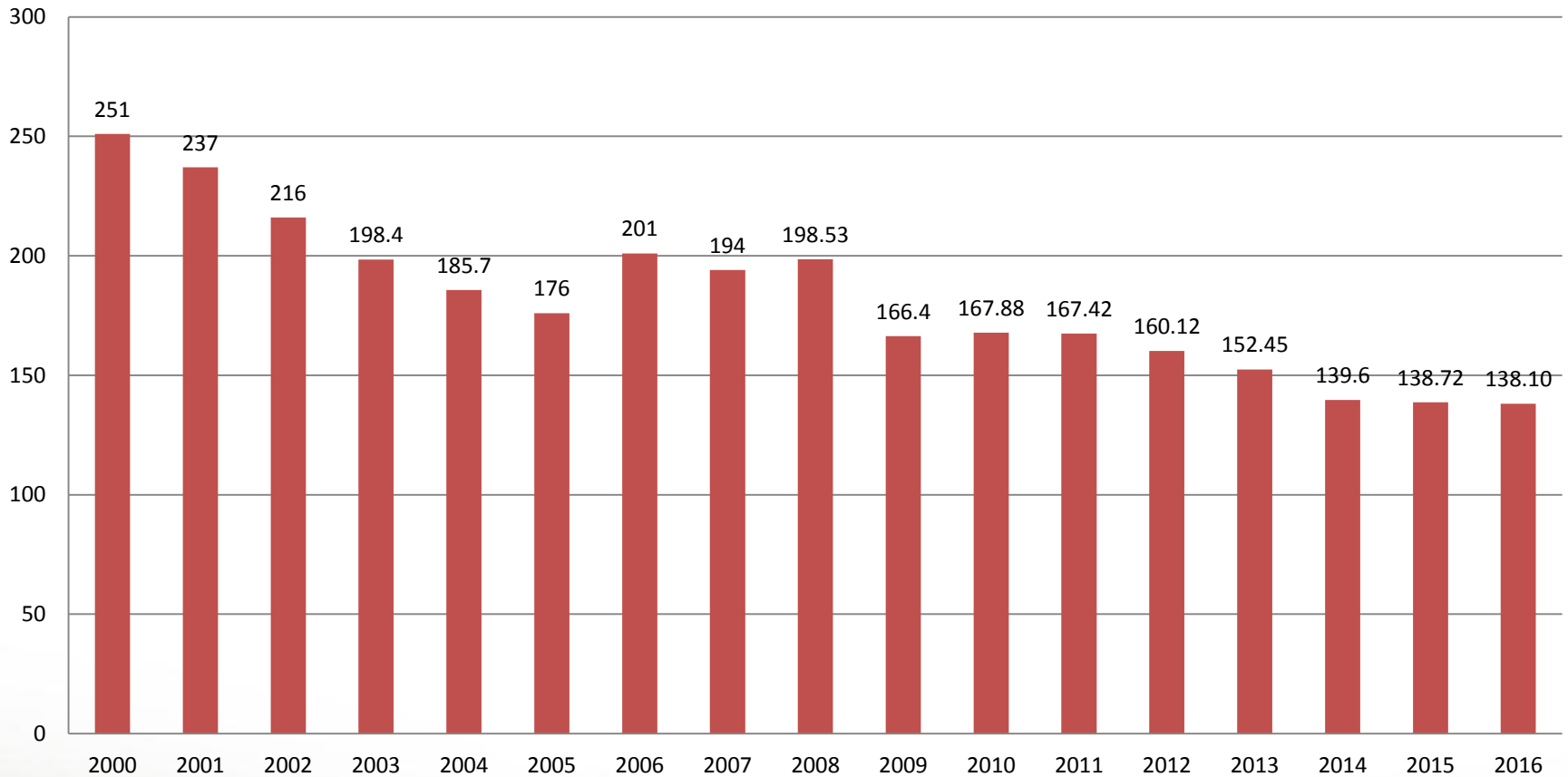
2016 Preliminary Budget – Historical Review

Total Revenue vs. Population Growth



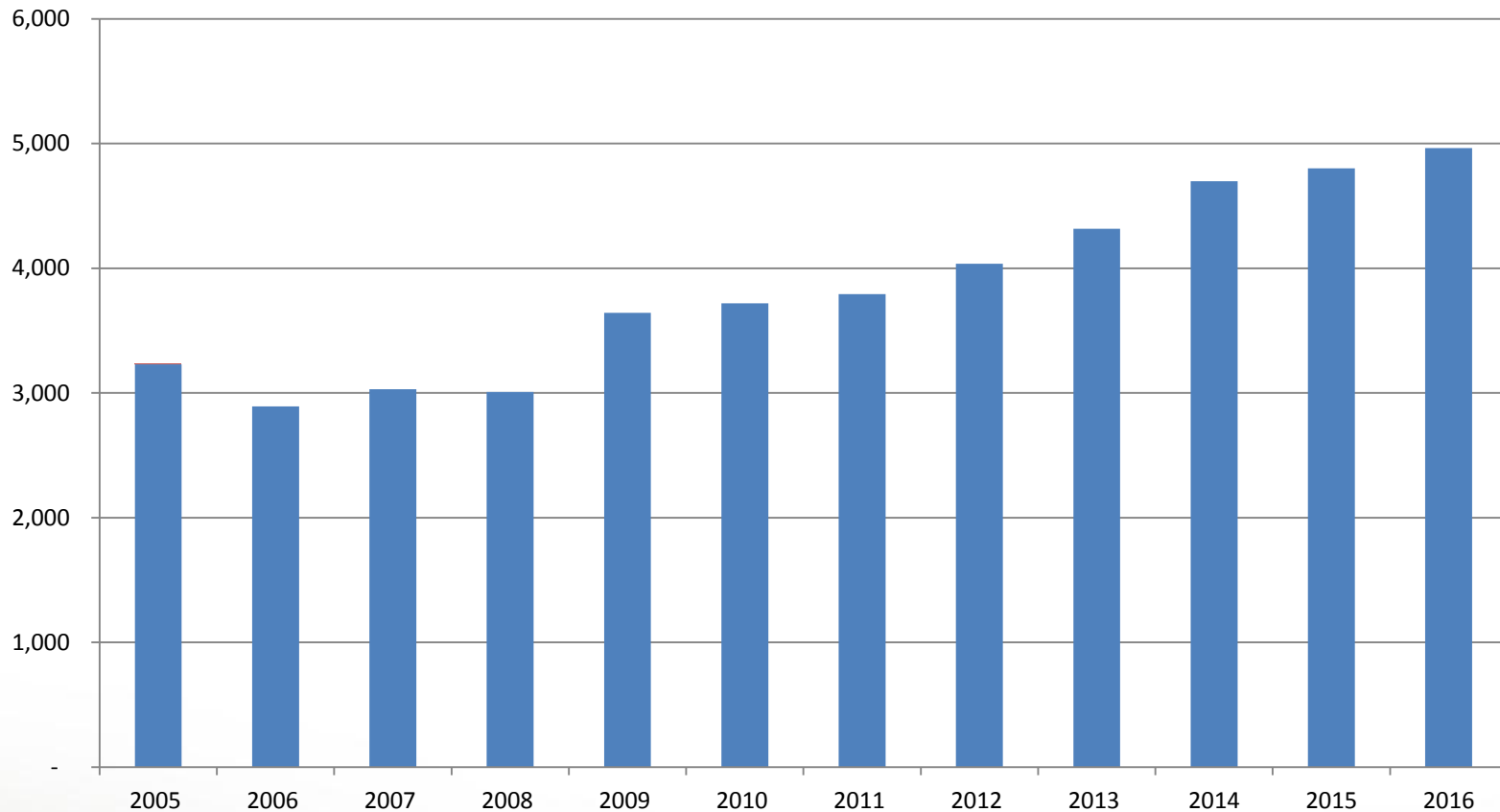
2016 Preliminary Budget – Historical Review

Number of Full-Time Equivalent Public Health Employees



2016 Preliminary Budget – Historical Review

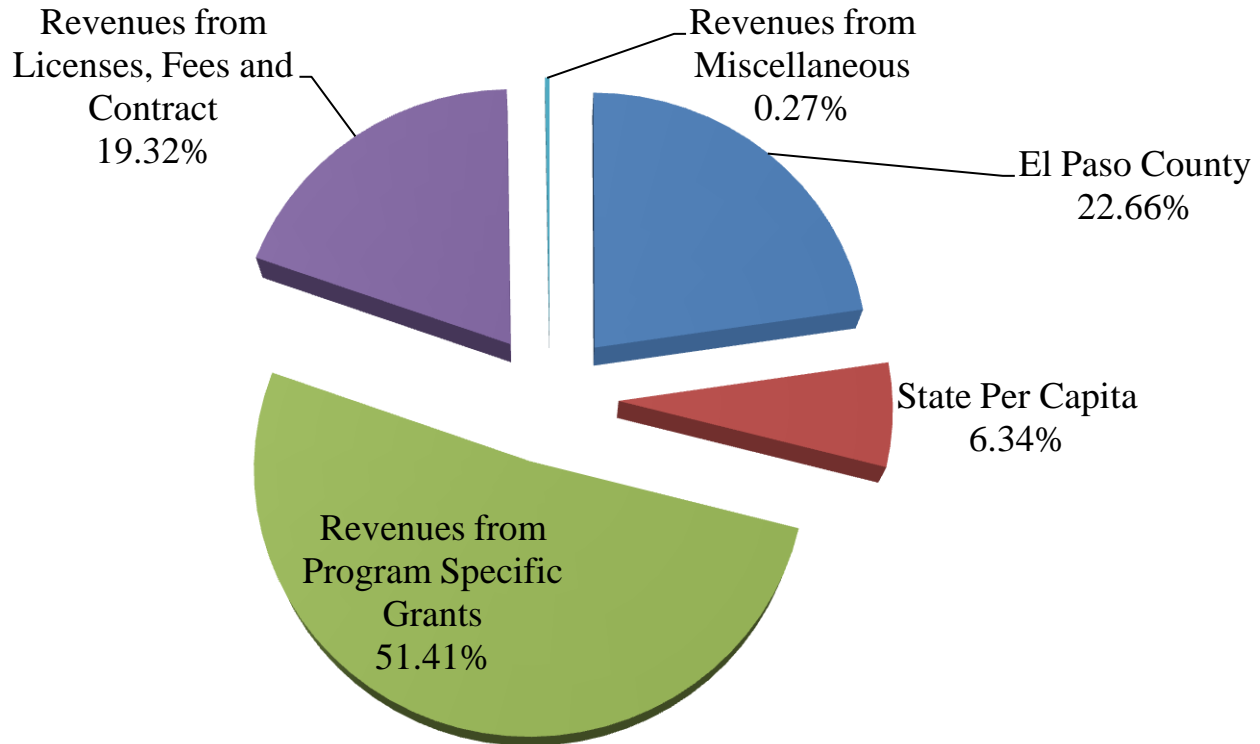
Citizens Served Per Public Health Employee



Current Financial Status

	2014	2015
	Actual	Forecast
Revenue		
El Paso County	\$ 3,285,804	\$ 3,285,804
State Per Capita	887,983	905,729
Revenues from Program Specific Grants	7,271,123	7,314,106
Revenues from Licenses, Fees, and Permits	2,697,228	2,801,275
Revenue from Miscellaneous	77,330	39,438
Total Revenues	\$ 14,219,468	\$ 14,346,352
Expenditures		
Personnel Expense	\$ 10,237,308	\$ 10,153,473
Operating	3,951,903	4,192,879
Capital Expense	-	-
Total Expenditures	\$ 14,189,211	\$ 14,346,352
Net Change in Fund Balance	\$ 30,257	-

2016 Preliminary Balanced Budget Revenue



2016 Revenue Projected \$14.5 Million

2016 Preliminary Balanced Budget Summary

		2016
		Preliminary Balanced Budget
Revenue		
El Paso County	\$	3,285,804
State Per Capita		919,522
Revenues from Program Specific Grants		7,454,285
Revenues from Licenses, Fees, and Permits		2,801,275
Revenue from Miscellaneous		39,438
Total Revenues	\$	14,500,324
Expenditures		
Personnel Expense	\$	10,053,335
Operating		4,446,989
Capital Expense		-
Total Expenditures	\$	14,500,324
Net Change in Fund Balance	\$	-

2016 Strategic Initiatives

- Hired Development and Strategic Initiatives Officer in 2015
- Key initiatives for 2016 include:
 - Integration of Behavioral Health
 - Cancer, Cardiovascular and Chronic Pulmonary Disease Funding
 - Unintentional Injury Prevention (youth and elderly populations)
 - Intentional Injury Prevention (suicide prevention)

2016 Preliminary Balanced Budget

Compiling the 2016 Public Health Budget

Revenue Estimates include:

- El Paso County Support – No Change from 2015
- Per Capita State Funds – Minor increase of \$13,791 from 2015
- Program Specific Grants and Fees
 - Vary based on historical analysis and statutory impacts
 - Programs in general have very little variance to 2015
 - New grants and contracts are incorporated within the budget

Questions?