

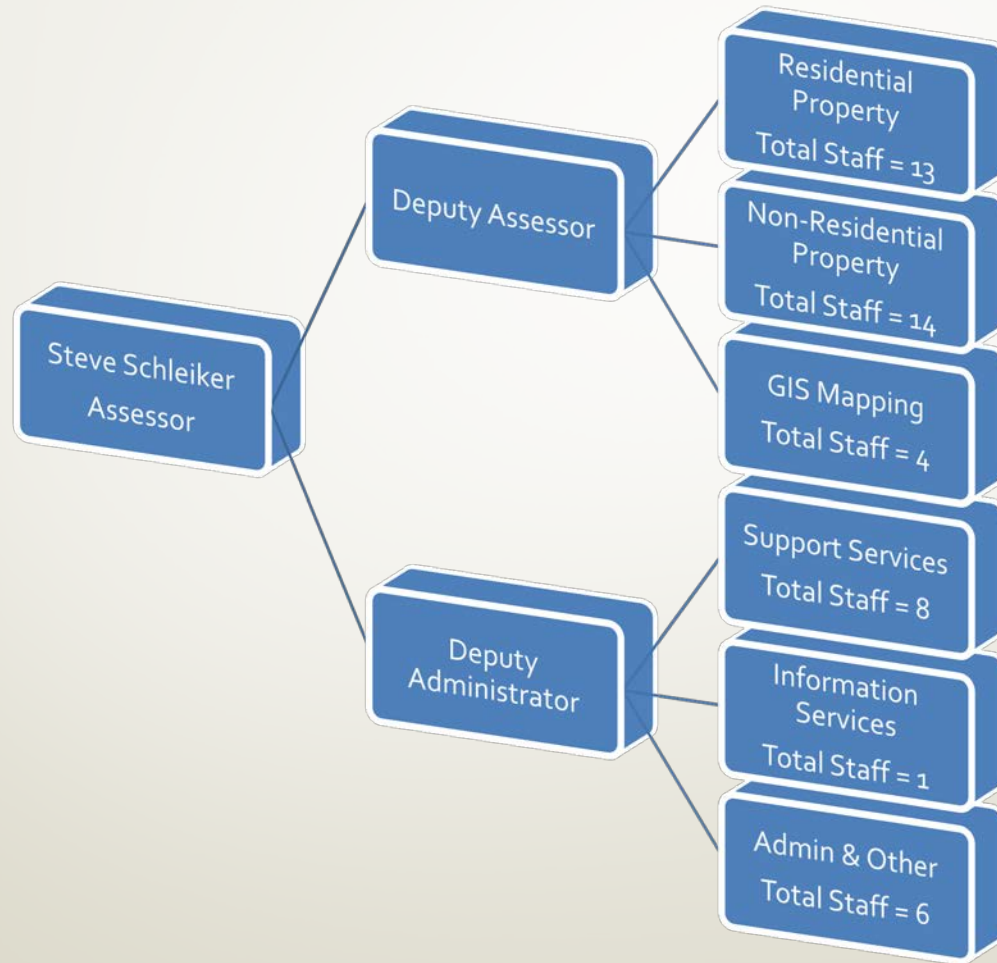


2018 Budget Presentation Assessor's Office

Steve Schleiker, El Paso County Assessor

Presentation Date: November 9, 2017

Organizational Chart



Operations

- **County Assessor**
 - Is responsible for the management and operation of the Assessor's Office. This includes annually preparing, documenting and making budget recommendations as well as the management of all assessment personnel
- **Residential**
 - The Primary function of the Residential Department is to value all improved (buildings or structures) residential parcels
- **Non-Residential**
 - Commercial – The Commercial Department is responsible for determining the value on commercial and industrial classes and subclasses of property
 - Land – the Land Department is responsible for valuing all vacant, improved and agricultural land throughout the entire county
 - Personal Property – The Personal Property Department discovers, lists, classifies and values all business personal property that is productive of income



Operations (Cont.)

- **GIS Mapping**
 - The GIS Department is responsible for the coordination of geographic information and data for assessment purposes and the maintenance of the countywide geographic information systems (GIS)
- **Support Services**
 - Provide public assistance, process organizational/personal exemptions, process deeds. In addition, they process the Senior Homestead & Disabled Veteran Exemptions
- **Information Services**
 - Monitor and maintain ASR applications, operations and network
- **Administration**
 - Assist in preparing property appeals, Finance, Human Resource and ASR Communications



Mandates/State Statutes Required

- The office of Assessor is established under Section 8 Article XIV (14) of the Colorado Constitution. According to Title 30 of the Colorado Revised Statutes:
 - Assessor Duties...

El Paso County Assessor Purpose Statement:

Our mission is to meet or exceed the statutory requirements, rules, and regulations of the State of Colorado in the administration of El Paso County's property assessment and mapping system that is accurate, fair, and equitable to the citizens and to serve our customers in a courteous and efficient manner that fosters mutual respect and understanding.



Office Objectives

- Provide property owners with current, accurate information in a professional, courteous, and efficient manner, offering the highest level of customer service
- Provide uniform, fair, and equitable value assessments on all real and personal property within El Paso County
- Provide parcel mapping and parcel ownership information that is current and accurate
- Provide other departments, taxing districts, and local government with current, accurate information on which they can base their decisions



Assessor Budget

- The El Paso County Assessor's Office has 52 allocated positions, and currently employs 48 full time employees, and has a 2017 budget of approximately \$3.7 million. Property taxes are the local public agencies' major source of General Purpose Revenue. The County Assessor's property tax assessment rolls establish the property tax base for all local government agencies in El Paso County, including cities, special districts, and school districts.



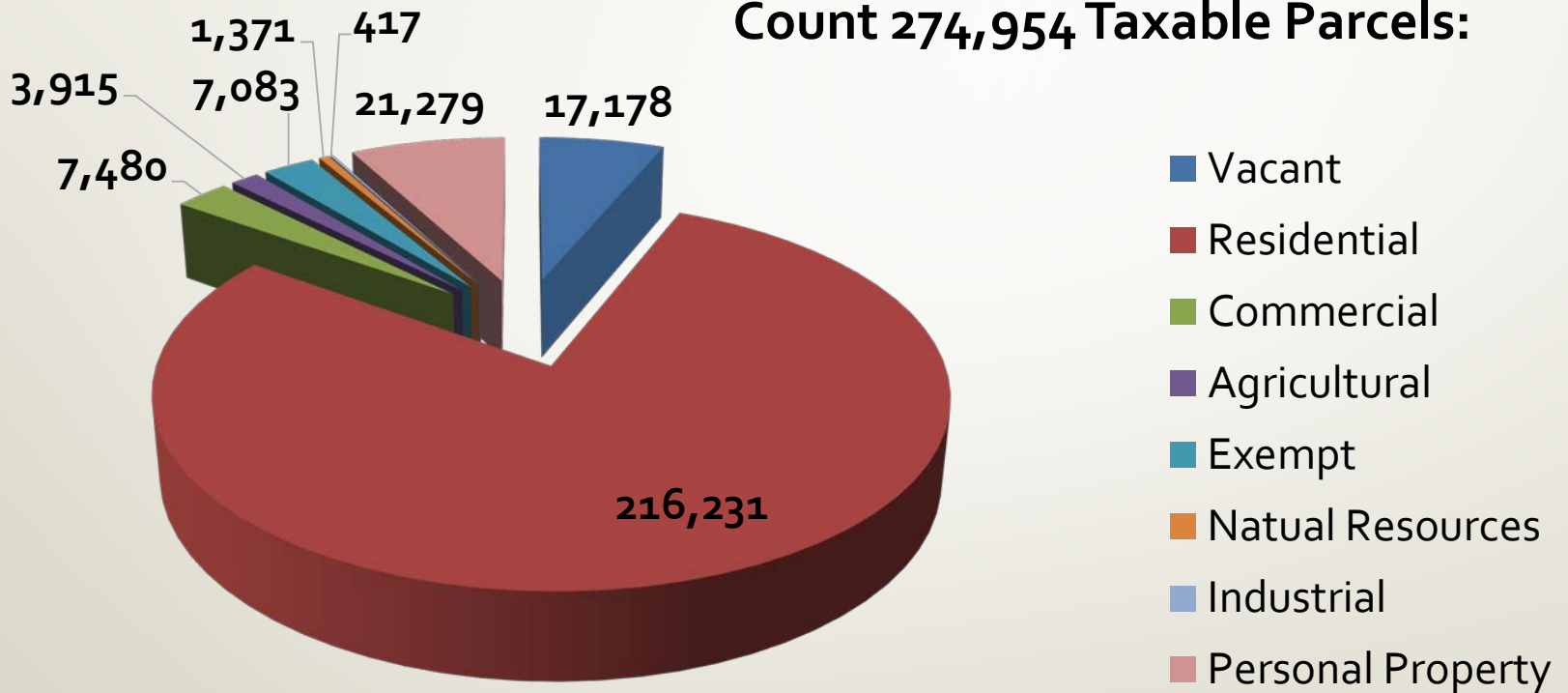
Assessor Budget (Cont.)

- The Assessor's Office conducts appraisals of each property in El Paso County. Then we estimate the value of the property for '*ad valorem*' taxation purposes. The assessed valuation of the property determines the share of local property taxes.
- Currently, there is nearly 275,000 taxable and exempt parcels, and over 21,000 taxable personal property schedules in El Paso County.



Assessor Budget (Cont.)

Count 274,954 Taxable Parcels:



2013-2017 Taxable Parcel Count

Year:	Taxable Parcel Count:	Change:
2013	263,492	
2014	265,473	+1,981
2015	268,816	+3,343
2016	271,201	+3,000
2017 est.	274,954	+3,000



2017 & 2018 Operating Indicators

	2016 Actual	2017 Estimated:	2018 Estimated:
# of abstracts provided to all taxing entities	283	289	295
# of telephone calls handled	32,847	33,832	34,847
# of maps produced for the public	168	175	179
# of appeals heard by the Assessor	365	3,994	350
# of residences inventoried and measured	2,283	2,762	3,314
# of property transfers logged	41,000	42,500	43,000



Assessor 2018 Budget Highlights

- Maintain “exceeds standard” property assessment levels and uniformity measurements to ensure a fair and equitable assessment is achieved
- Continue leveraging technology, developing/testing new processing paradigms, and transforming some policies, practices, and procedures to improve workflows and promote operational efficiencies
- Support the professional growth and development of staff
- 5-Year Road Map



Questions?

